

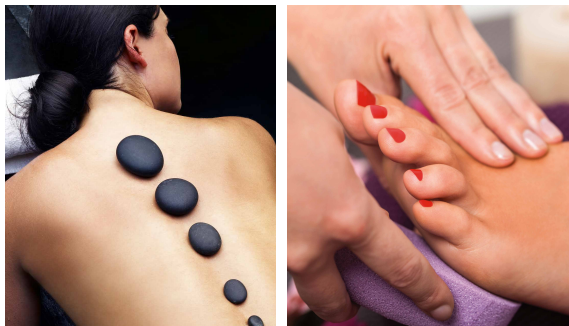
Darling Reflections™
SPA AT ARROWWOOD



DARLING REFLECTIONS SPA Dial 374

Hours Vary

The Darling Reflections Spa at Arrowwood is the perfect place to unwind, relax and reward oneself. We offer an extensive menu of therapeutic and beauty services. Indulge with a full body massage, body and facial skin treatments, or nail therapies. Our exceptional staff of certified massage therapists and licensed cosmetologists are dedicated to providing you with a truly extraordinary spa experience.



THE PERFECT
Destination For

Weddings

Family Reunions

Corporate Retreats

Romantic Getaways

Girlfriend's Weekend

Golf Packages

Company Annual Meetings

Ask Our Sales Staff For Details:

320-759-5019

resort@arrowwoodresort.com



Arrowwood®
RESORT & CONFERENCE CENTER
by CLUBHOUSE®

2100 Arrowwood Lane NW

Alexandria, MN 56308

866-386-5263

www.ArrowwoodResort.com



WHERE WINTER IS

Just More Fun!

WINTER

Ice Fishing • Sledding

Relax • Eat • Broomball

Ice Skating • Indoor Sports Courts

Cross Country Skiing

& SO MUCH MORE!



Arrowwood®
RESORT & CONFERENCE CENTER
by CLUBHOUSE®

(866) 386-5263 www.ArrowwoodResort.com

Outdoor ACTIVITIES

SNOW CENTER Dial 270

Open daily at 9 a.m.

Come to the Snow Center for sledding, cross country skiing, skating, broomball or just sitting in a warm, relaxing environment. Children must have adult supervision.

SNOWMOBILE TRAIL

The Snow Center is located right on the snowmobile trail. There are over 500 miles of groomed snowmobile trails in Douglas County. We have maps available at the Snow Center.

ICE FISHING

Enjoy ice fishing in the comfort of one of our ice houses. Rattle wheels included. Must supply own bait. Dial 270 for advanced reservations. 24-hour advance notice.

Small House (4 holes)Four Hours \$120 / Eight Hours \$200
Large House (8 holes)Four Hours \$180 / Eight Hours \$300

CROSS COUNTRY SKIING

Cross country ski equipment is available at the Snow Center. We have area locations that you may bring the skis to. When you return, come inside and warm by the fire.

SLEDDING

Available at the Snow Center. Sledding hill for all ages to enjoy. Sleds are complimentary. Small children must be accompanied by an adult, and must sign in at the Snow Center.

ICE SKATING

Bring your own skates or rent ours. You may skate on the lake in front of the hotel as conditions permit. Warming house is available. The skating pond is located in front of the townhomes, no warming house available.

BROOMBALL

Stop by the Snow Center to check out your equipment. Play is on the lake in front of the hotel weather permitting.

POPCORN

Help yourself to some popcorn, then just sit back and enjoy. Located inside the Snow Center.

BOARD GAMES

Fun for the whole family. We have a variety of games to choose from. Play them at the Snow Center or check them out and bring to your room. Please return the following day.

CHILDREN'S CORNER

The Snow Center has an area for small children. Parents and Grandparents can come and relax while the little ones play with toys.

CAMPFIRE

The Snow Center will feature a campfire daily by the sledding hill. Weather permitting

GAS

Arrowwood has gas available at the Snow Center right off the DATA trail.



THE BIG SPLASH INDOOR WATERPARK DIAL 401

Open Friday 4:00 p.m. • Open Saturday & Sunday 9:00 a.m. • Closed on Mon, Tues, Wed & Thurs • Hours may vary upon demand.

"The Big Splash", our 38,000 sq ft indoor waterpark provides hours of fun for the young and old alike. Family Arcade located inside the Waterpark. Wristband is required for admission. The waterpark features three four-story waterslides that twist and turn inside and outside the waterpark, the lazy river inner-tube ride, lily pad waterwalk, basketball shoot out, a tropical whirlpool spa with waterfall, children's playfort with three slides, water blasters, geysers and deck bubblers - all topped with "The Calypso Cabana" a 500-gallon splash bucket!

The Arrowwood staff is dedicated to ensure you have fun whether inside or out and make your stay as enjoyable as possible.

Children must be accompanied by an adult at all times. Hours and activities are subject to change.

For your enjoyment and the pleasure of others, we consider 10:30 p.m. to be the appropriate time to limit various activities.

We ask for your consideration and assistance by reducing television and radio sound in the guest rooms and public areas.